

EAT EuroAudioteam, s.r.o.

INSTRUCTIONS FOR USE EAT Forte

Dear music lover,

Welcome and congratulations on your purchase of our EAT Forte turntable. Your EAT Forte was hand-crafted by our team of skilled technicians, and has been rigorously tested and is ready for your enjoyment.

Please, take the time to read this manual carefully to ensure that you understand quality from your EAT Forte turntable and you will keep your Forte in as-new condition for many years.

Your EAT Consultant is:

Serial Number:



EAT Forte

Controls, features and connections

- 1 Motor unit
- 2 Main turntable chassis
- 3 Platter
- 4 2x Drive belt
- 5 Speed control
- 6 Arm board and Spirit level
- 7 6 x Adjustable feet
- 8 Record weight (not shown) *
- Grounding cable (not shown) *
- Power supply (not shown) *
- Gloves (not shown)*
- Grease (not shown)*
- Small tooling set (not shown)*



Warning of a hazard for the user, the unit or possible misuse.

Before starting assembly make yourself acquainted with the parts listed above. Separately packed items are marked with an asterisk *.

Set-up

For the safe and trouble less installation we would suggest to do it in a company of 2 people.

- 1, Open the wooden crate by unscrewing the top of the crate. Remove the wooden top.
- 2, Remove the styropore top with all accessories.
- 3, Unpack the first part of the turntable – the main chassis. Remove the packaging fabric from the main turntable chassis. Install the grounding cable at the bottom of the main chassis. You will find the grounding cable inside of the accessories box.
- 4, Unpack the motor unit and place it to the left side of the main turntable chassis.
- 5, Pick up the last part of the turntable – the platter. Remove the plastic transport cover of the bearing shaft. Remove the red transport cap on the bottom of the platter. Please, check if there is enough grease on the bearing shaft. If the shaft is too dry please, use the grease that you find in the accessories box. Install the platter carefully. The best way would be that one man holds the platter and the second person gives the direction for fitting the platter into the bearing.

Important Note: Please, check every 3 months the level of the grease in the bearing shaft removing the platter from the bearing.

- 6, Set up the level and the height of the chassis by turning the feet to the left side or opposite. By turning the feet to the right direction you set up the chassis up and by turning them to the left direction you set your turntable to the lower position. The motor unit and the main chassis of the turntable must be set at the same level. Finally level it with the level weight that you find in the accessories box.

Check the distance between the motor unit and main chassis by using our measurement stick. The correct distance between those 2 units must be 1 cm.

- 7, Install the two pieces of the white belts. There are two different lengths of the belts. Please, first install the shorter one to the lower positioned motor pulley. Second, install the longer belt to the higher positioned motor pulley.
- 8, Attach the power supply to the back side of the motor unit.
- 9, Motor unit. The small green light dot will indicate that motor is under the power.

The speed control has 3 buttons – slow

-speed change or stand by

- fast

By pressing the middle button you switch on the motor to the 33.3 r.p.m..

After the speed is stabilized at 33.3 you can change speed to 45 rpm by pressing again the middle knob of the speed control. If you wish to change speed again from 45 rpm to 33.3 rpm you press again the middle button.

Repeatedly pressing the + or - buttons increases or decreases the replay speed in twenty steps of 0,1 r.p.m. respectively. The adjusted speed is displayed digitally.

Useful tips

The base and the record player should be positioned on a low-resonance surface such as wood or multiple layer ply board to avoid structural vibrations disturbing replay.

Mains power connection

The turntable is supplied with a power supply suitable for your country's mains supply. Check the label before connecting to ensure compliance with the mains rating in your house.

If the player is not used over a long period of time the drive belt can be removed to prevent unequal stretching.

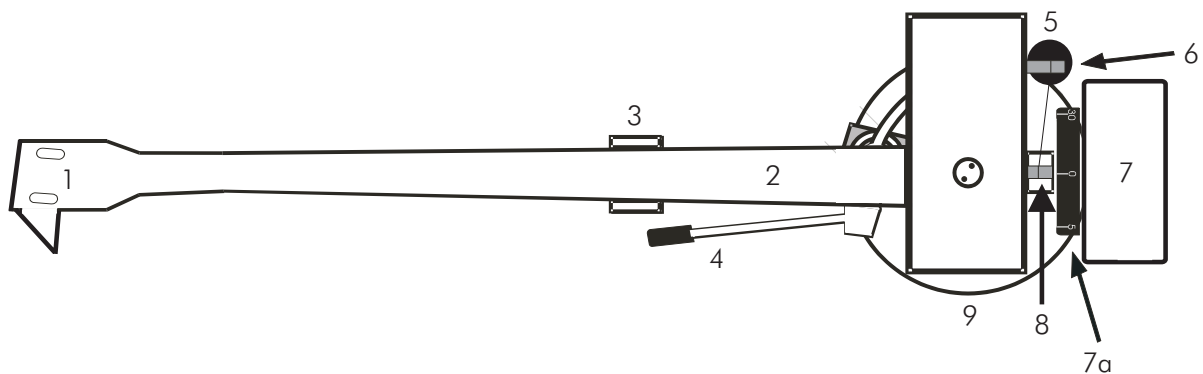


Always disconnect the record player from the mains power supply as a precaution before maintenance!

Technical specifications EAT Forte

* Electronic speed change	* 33,33/* 45,11
Speed variance	±0,09 %
Wow and flutter	±0,01 %
Signal to noise	-73dB
Power consumption	2W
Outboard power supply	16V/1.000mA AC, suitable for your country's mains supply
Dimensions (W x H x D)	
Weight	65 kg

Pro-Ject 12"CC Evolution Tonearm



- 1 Headshell with finger lift
- 2 Tonearm tube
- 3 Tonearm rest and removable transport lock
- 4 Tonearm lift lever
- 5 Anti-skating weight *
- 6 Anti-skating weight wire support
- 7 Tonearm counterweight * 7a Downforce scale
- 8 Anti-skating weight adjustment scale
- 9 Tonearm base

Cartridge downforce adjustment (Pro-Ject Evolution tonearms)

Remove the transport lock (3) from the tonearm. Store it in the original packaging so they are available for any future transportation.

Pushing carefully, turn the counterweight (7) onto the rear end of the tonearm tube (2), and so that the downforce scale (7a) shows towards the front of the player. Lower the armlift and position the cartridge in the space between arm rest and platter. Carefully rotate the counterweight (7) until the armtube balances out. The arm should return to the balanced position if it is moved up or down. Do not forget to remove the cartridge protection cap if fitted.

Once the arm is correctly balanced return it to the rest (3). Hold the counterweight (7) without moving it, and gently revolve the downforce scale ring (7a) until the zero is in line with the anti-skating prong (8). Check whether the arm still balances out.

Rotate the counterweight counter clockwise (seen from the front) to adjust the downforce according to the cartridge manufacturer's recommendations. One mark on the scale represents 1 mN (= 0,1g / 0,1 Pond) of downforce.

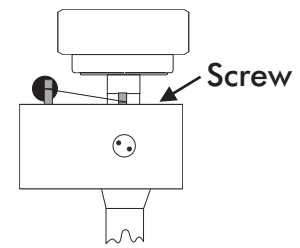
Tonearm Pro-Ject 12cc Evolution: The counterweights (7) supplied are suitable for cartridges weighing between 4 - 7g, 6 - 9g, 8 - 12g or 10 - 15g.

Adjust the downforce prior to installing the anti-skating weight.

Adjusting the azimuth (Pro-Ject Evolution tonearms)

The cartridge needle must be vertical in the record groove in order to trace the groove wall modulations correctly.

A small screw at the bearing end of the arm allows incorrect azimuth to be corrected if your needle is not mounted exactly perpendicular to the cartridge body (which is often the case).



Slacken off the screw just enough to be able to revolve the arm tube without applying force. Note! Do not remove the screw completely!

With the aid of a good magnifying glass adjust the needle until it is vertical in the groove (i.e. perpendicular to the record's surface). Ideally this should correspond to the top surface of the cartridge body being parallel to the record surface, but in practice this is often not the case.

When you are satisfied that the needle is vertical retighten the screw carefully.

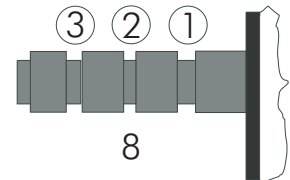


Under no circumstances should the arm tube be adjusted with the needle still in the record groove! Irreparable damage may be caused to the cantilever suspension! The arm must be lifted to make each adjustment and lowered afterwards to check it.

Anti-skating force adjustment (Pro-Ject Evolution tonearms)

The anti-skating force must be adjusted corresponding to the downforce as follows:

<u>Downforce</u>	<u>Groove in the stub (15)</u>
10 - 14mN	1 st from bearing rings
15 - 19mN	2 nd " " "
20mN and bigger	3 rd " " "



Hang the loop of the thread of the anti-skating weight in the groove of the anti-skating stub (15) corresponding to the downforce applied to your cartridge and hang the thread in the groove of the wire support (17).

Adjusting the vertical tracking angle -vta- (Pro-Ject Evolution tonearms)

Put a record on the platter. When the needle is lowered into the record groove and the tonearm is not resting on the tonearm rest (3), the tube (2) of the tonearm should be parallel to the surface of the record.

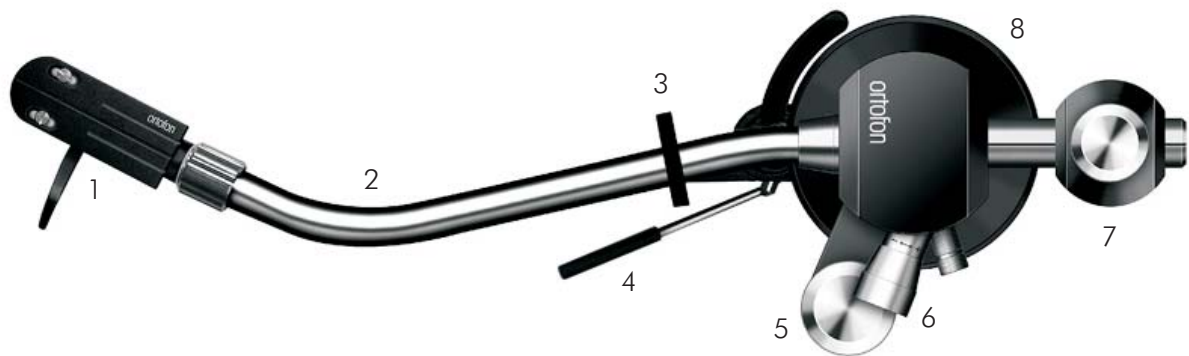
If it is not loosen both hexagon screws in the tonearm base (9) just enough to allow vertical movement of the arm pillar without force and slide the arm up or down until it is parallel.

Carefully retighten the hexagon screws without applying excessive force (which would deform the arm pillar) – finger tight is quite sufficient.

Technical specifications Pro-Ject 12cc Evolution

Tonearmn	medium mass
Supplied counterweights	cartridge weight 4 - 7g, 6 - 9g, 8 - 12g or 10 - 15g
Downforce range	10 - 35mN
Effective tonearm length	12 " (304,8mm)
Overhang	13,2mm
Tonearm cable length	approx. 120cm
Weight	271g (without counterweight)

Ortofon RS tonearms



- 1 Detachable headshell with finger lift
- 2 Tonearm tube
- 3 Tonearm rest and removable transport lock
- 4 Tonearm lift lever
- 5 Anti-skating force adjustment knob
- 6 Downforce adjustment knob
- 7 Tonearm counterweight with securing screw*
- 8 Tonearm base
Stylus pressure gauge (not shown) *

Cartridge downforce adjustment (Ortofon RS-Tonarm)

Remove the transport lock (3) from the tonearm. Store it in the original packaging so they are available for any future transportation. Set the knob (5) to 0.

Place the counterweight (7) halfway along the counterweight support rod at rear of arm, being sure to have the counterweights (7) securing screw uppermost. Lower the armlift and position the cartridge in the space between tonearm rest (3) and platter. Carefully move the counterweight (7) along the support rod, until the armtube (2) balances out. The arm should return to the balanced position if it is moved up or down. Do not forget to remove the cartridge protection cap if fitted.

With the power off, and the platter static, place the supplied stylus pressure gauge onto the platter.

Carefully lower the armlift and position the tip of the stylus on the pressure gauges measuring tongue. The downforce will be displayed digitally.

Adjust the Downforce, using the knob (6), to the cartridge manufacturer's recommendations. This adjustment must be done with the tonearm resting on the tonearm rest (3). Finally secure the counterweight with the securing screw (7).

The counterweight (7) supplied is suitable for cartridges weighing between 18 - 40g.

Anti-skating force adjustment (Ortofon RS and AS tonearms)

The anti-skating force must be adjusted corresponding to the downforce. Rotate the knob (5) to adjust the Anti-skating force. One mark on the scale represents 5 mN (= 0,5g / 0,5 Pond) of downforce.

Adjusting the vertical tracking angle -vta- (Ortofon RS and AS tonearms)

Put a record on the platter. When the needle is lowered into the record groove and the tonearm is not resting on the tonearm rest (3), the surface of the cartridge body should be parallel to the surface of the record.

If it is not loosen the hexagon screw in the tonearm base (8 RS tonearms or 7 AS tonearms) just enough to allow vertical movement of the arm pillar without force and slide the arm up or down until it is parallel.

Carefully retighten the hexagon screw without applying excessive force (which would deform the arm pillar) – finger tight is quite sufficient.

Technical specifications Ortofon RS-212D and Ortofon RS-309D

Tonearm	medium mass
Supplied counterweight	cartridge weight 18 - 40g (including headshell)
Downforce range	0 - 50mN
Effective tonearm length	RS-212D - 229mm / RS-309D - 326mm
Overhang	15mm
Offset angle	RS-212D - 22 Grad / RS-309D - 19 Grad
Tonearm cable length	approx. 120cm
Weight	RS-212D - 655g / RS-309D - 725g (plus headshell and cartridge)

Fitting and connecting the cartridge

All cartridges with half inch mounting holes can be fitted. Leaving the needle's protection cover on, fit the cartridge to the headshell using the screws supplied with the cartridge by passing one screw through each slot in the headshell (1). Do not tighten the nuts yet.

Connect the tonearm wires to the cartridge pins as follows:

white	left channel positive (L+)
red	right channel pos. (R+)
green	right channel return (R -)
blue	left channel return (L -)

The full sound quality of the record player can only be achieved if the cartridge is correctly adjusted. Particular tools like the PRO-JECT alignment tool are required to accomplish this job properly. If you are not well acquainted with the adjustment of cartridges you are advised to call upon the willing help of your PRO-JECT dealer to accomplish this task for you.



Please note: adjusting a cartridge and tonearm calls for the greatest care in order to avoid damaging the cartridge or tonearm bearings. Leave this work to your dealer if you are in any way unsure of the necessary steps and precautions to be taken.

Service

Should you encounter a problem which you are not able to alleviate or identify despite the above information, please contact your dealer for further advice. Only when the problem cannot be resolved there should the unit be sent to the responsible distributor in your country.

Guarantee repairs will only be effected if the unit is returned correctly packaged. For this reason we recommend keeping the original packaging.

Never return a record player without making sure that it is safely disassembled and correctly packaged in the original packaging. Please remove these parts and pack them separately: feet, counterweight, platter, cartridge and belt. Fit the cartridge protection cap. Insert the transport lock for the tonearm prior to carefully packaging the record player.

Warranty



The manufacturer accepts no responsibility for damage caused by not adhering to these instructions for use and/or by transportation without the original packaging. Modification or change to any part of the product by unauthorized persons release the manufacturer from any liability over and above the lawful rights of the customer.

EAT EuroAudioTeam is a Registered
Trademark of Jozefina Lichtenegger.

Copyright © 2010. All rights reserved.

The information was correct at the time of going to press. The manufacturer reserves the right to make changes to the technical specification without prior notice as deemed necessary to uphold the ongoing process of technical development.